

SAFETY AND SCHOOL ENVIRONMENT

Non-CSAP Course Offerings

Your School Offers	does	does not
• art.....	<input type="checkbox"/>	<input checked="" type="checkbox"/>
• drama or theater.....	<input checked="" type="checkbox"/>	<input type="checkbox"/>
• music.....	<input checked="" type="checkbox"/>	<input type="checkbox"/>
• physical education.....	<input checked="" type="checkbox"/>	<input type="checkbox"/>
• opportunity for civic or community engagement.....	<input checked="" type="checkbox"/>	<input type="checkbox"/>
• internet safety program.....	<input type="checkbox"/>	<input checked="" type="checkbox"/>
• International Baccalaureate.....	<input type="checkbox"/>	<input checked="" type="checkbox"/>
• extracurricular activities.....	<input checked="" type="checkbox"/>	<input type="checkbox"/>
• athletics.....	<input checked="" type="checkbox"/>	<input type="checkbox"/>
• career and technical education.....	<input checked="" type="checkbox"/>	<input type="checkbox"/>
• advanced placement.....	<input type="checkbox"/>	<input checked="" type="checkbox"/>
• honors.....	<input checked="" type="checkbox"/>	<input type="checkbox"/>

Safety and Discipline

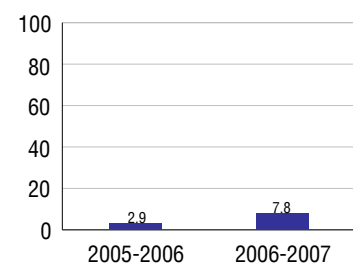
Safe schools are a top priority for parents, teachers, and communities. Your school safety and discipline record for the 2007-2008 school year is:

Type of Incident	Number of Incidents Reported	Percent of Total Incidents
Substance Abuse - Drugs	2	7.7%
Substance Abuse - Alcohol		
Substance Abuse - Tobacco		
Felony Assaults		
Fights		
Possession of Dangerous Weapons		
Other Violations Code of Conduct	24	92.3%

Student Attendance and School Calendar

2007-2008	Your School
Enrollment	109
Average Daily Attendance	102
Student Dropouts	7.8%

Dropout Rate



Student Information Over Time

	2005-2006	2006-2007	2007-2008
Student Enrollment Stability	91.7%	86.7%	84.4%
Students Eligible for Free and Reduced Lunch	41.7%	42.2%	52.3%

For more information and further details about this report, visit www.state.co.us/schools
Colorado Department of Education, 201 East Colfax Ave. Denver, CO 80203

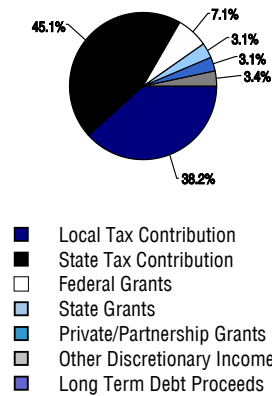
Front Range Early College
0010/0212/H
601 E 64th Avenue . Denver, CO 80229 . 303-853-1960
10/20/2008

DISTRICT TAXPAYER'S REPORT

Sources of School District Revenue 2007

Local Tax Contribution	\$17,823,450
State Tax Contribution	21,009,743
Federal Grants	3,331,764
State Grants	1,466,656
Private/Partnership Grants	1,433,104
Other Discretionary Income	1,569,578
Total District Operating Revenue	\$46,634,295
Long Term Debt Proceeds	0
Total District Revenue	\$46,634,295
Total District Operating Revenue Per Pupil =	\$8,981
Total District Revenue Per Pupil (Including Long Term Debt) =	\$8,981
District Per Pupil Operating Revenue =	\$6,082
State Average Per Pupil Operating Revenue =	\$6,080

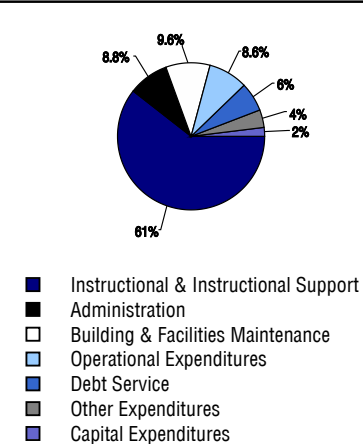
District Source of Funds 2007



District Use of Funds 2007

Instructional & Instructional Support	\$28,725,020
Administration	4,190,234
Building & Facilities Maintenance	4,557,153
Operational Expenditures	4,085,967
Debt Service	3,025,340
Other Expenditures	1,797,988
Total District Operating Expenditures	\$46,381,702
Capital Expenditures	970,985
Total District Use of Funds	\$47,352,687

District Use of Funds 2007



District Debt and Capital Construction & Equipment

Total Outstanding Bonded Debt	\$13,880,000
Average Annual Percentage Interest Rate on Debt	5.2%
Amount Raised from Most Recent Bond	\$24,535,000
Amount Spent on New Buildings During Last 2 Years	\$0

Accreditation

Accreditation is Colorado's primary accountability system, incorporating achievement levels, academic growth, achievement gaps, post-secondary readiness, improvement planning, and compliance. The state accredits districts and districts accredit individual schools.

District Accreditation Status for the 2007-2008 school year:

Voter Approved Funding Changes

Your community did /did not hold an election in November 2006

The following items have been approved by voters:

TABOR Override

Bond

Mill Levy Increase

FRONT RANGE EARLY COLLEGE



MAPLETON 1

www.mapleton.us

School Accountability Report 2007-2008 School Year

School Performance Summary

Overall Academic Performance on State Assessments **Low**

Academic Growth of Students **Typical**

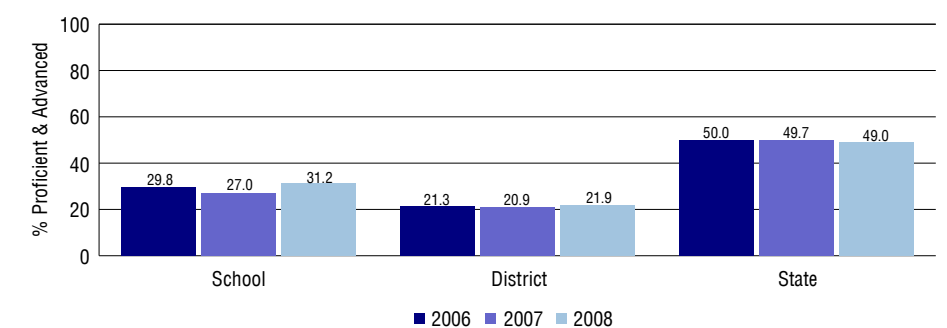
Overall Academic Performance on State Assessments

Each school in the State received a rating of "Excellent", "High", "Average", "Low", or "Unsatisfactory" for student academic performance based on 2007-2008 CSAP and COACT results. The rating is calculated using weighted percentages of each CSAP proficiency level for all content area and grade results for the school, as well as average COACT Reading, Writing, and Math Grade 11 results.

Academic Growth of Students

Each school in the State received a rating of "Low", "Typical", or "High" for student academic growth based on CSAP results. The calculation method is new for 2007-2008. The rating is calculated using student percentile scores matched over two years. More information about the Overall Academic Performance rating and Academic Growth of Students calculations can be found here: http://www.cde.state.co.us/cdeassess/SAR_Info.html.

Percent Proficient and Advanced for High Grades for All Content Areas



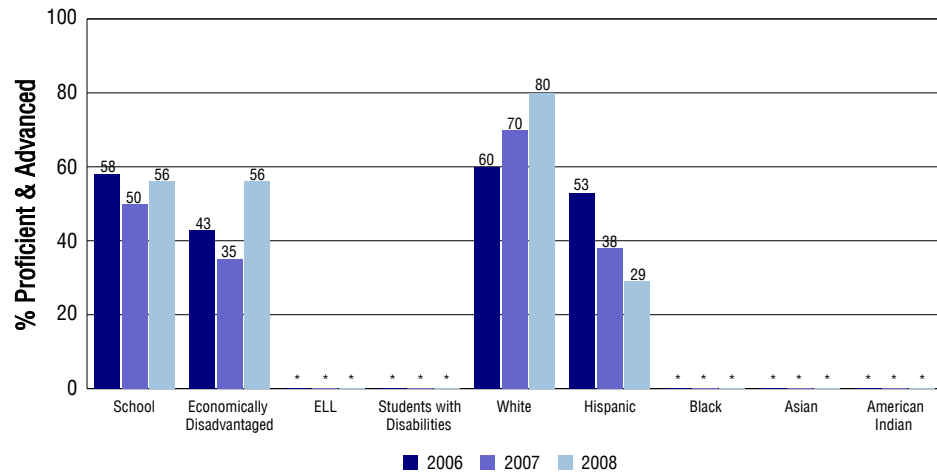
Student Test Scores Used For Calculating Overall Academic Performance

98.3%	Test Scores Counted
0.0%	Test Scores not used due to Language
1.7%	Test Scores not used due to New Student

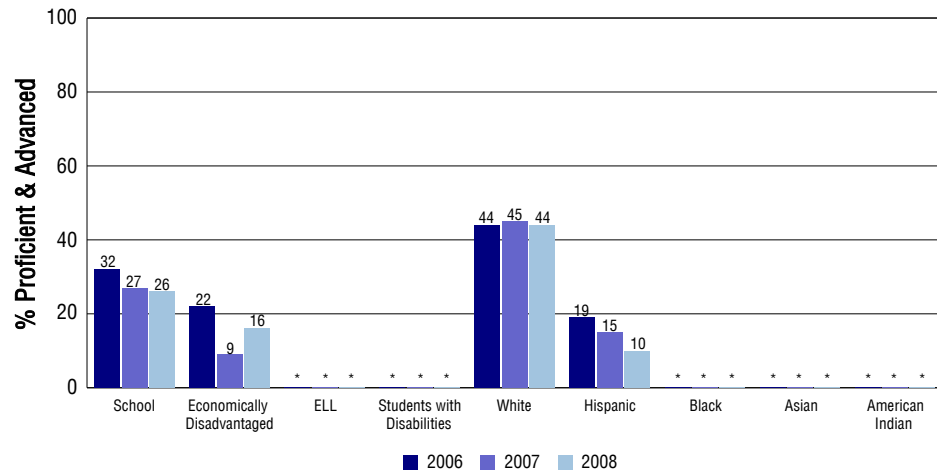
STUDENT PERFORMANCE

These graphs show the percent Proficient and Advanced trends over the past three years for Reading, Writing, and Math. Results are presented for the entire school for all reported grades as well as for different subgroups. Note: * indicates any group with less than 16 student results to be reported.

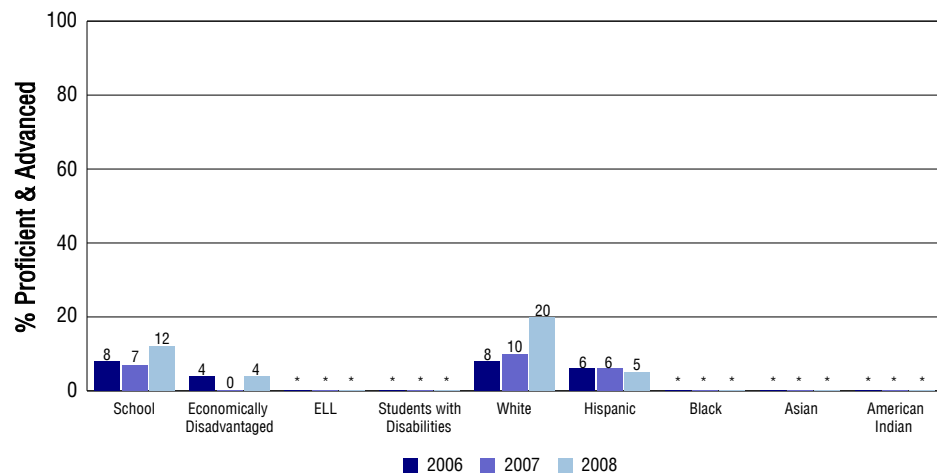
Reading



Writing



Math



SCHOOL INFORMATION

School Pride (as submitted by your district)

- A college preparatory environment with access to community college courses supported by their advisor, teachers and college coordinator.
- Students follow a rigorous formal curriculum and participate in learning internships and other community-focused learning opportunities.
- Students can earn an associate's degree or two years of college credit in a blended, five-year program
- A Big Picture design for 9th and 10th grade students, including personalized learning plans and learning internships.

School Goals (as submitted by your district)

Front Range Early College approaches instruction "one student at a time." Students and parents are active participants in the design and assessment of the student's personalized learning plan, which starts with the student's own interests. Students experience a college preparatory environment with access to community college courses and a rigorous formal curriculum. They participate in learning internships and other community-focused learning opportunities. Students receive strong support in the transition from high school to postsecondary courses.

No Child Left Behind - Adequate Yearly Progress

Did your school make AYP in reading?	Yes	Math?	No
Did your school make the graduation rate targets?	No		
How many targets does your school have?	5	Met?	3

Based on this school's academic performance, your child may be eligible for one or more of the following; ask your school if your child qualifies for:

Extra academic instruction either before or after-school, or in the summer
Mentoring

For additional information regarding Adequate Yearly Progress please visit
<http://www.cde.state.co.us/FedPrograms/ayp/index.asp>

How Front Range Early College Compares To High Schools Within A 75-Mile Radius

School	Program Type	Academic Performance	Academic Growth
Mapleton Preparatory High School		Low	Typical
Welby New Technology		Low	Typical
Global Leadership Academy		Low	Typical
Adams City High School(1)		Low	Low
Iver C. Ranum High School(2)		Low	Typical
The Pinnacle Charter School (High)(3)	Charter	High	High
Hidden Lake High School(2)	Alternative, Vocational	Unsatisfactory	Typical
Bruce Randolph School(4)		Low	High
Skyview Academy High School		Low	Low
Westminster High School(2)		Low	Typical

1 Located in Adams County 14 School District.
2 Located in Westminster 50 School District.
3 Located in Charter School Institute School District.
4 Located in Denver County 1 School District.

ABOUT OUR STAFF

School Employment

Each year, your district reports to the Colorado Department of Education on the number of adults who work in your school, as well as the type of work they do. Last year, your school employed:

	Your School		District	
	Full Time	Part Time	Full Time	Part Time
Teachers	6	2	287	18
Paraprofessionals	0	0	80	36
Administrators	0	0	25	1
Other Professionals	0	0	47	7
School Support	2	1	90	59
School Counselors	0	0	4	0
School Librarians	0	0	0	0
Total Staff	11		648	

Students per Teacher Ratio

	Student Enrollment	Students per Teacher
Grade 9	30	13.3
Grade 10	32	14.2
Grade 11	26	20.8
Grade 12	21	16.8

Professional Experience of Teachers

	Your School	District
Average years of teaching experience	4	8
Percent of teachers teaching in the subject in which they received their degree	50%	60%
Number of teachers with Masters or Doctoral degrees	6	140
Teachers with 3 years or more of teaching experience	4	201
Teachers with less than 3 years of teaching experience	4	104
Number of professional development days	4	7

Salaries

	Your School	District	State
Average Teacher Salary	\$43,509	\$48,751	\$47,494
Average Administrator Salary	\$0	\$96,637	\$80,444

Principal: N/R

Number of years as Principal at this school: N/R

Number of years as Principal at any school: N/R