

# SAFETY AND SCHOOL ENVIRONMENT

## Non-CSAP Course Offerings

Your School Offers	does	does not
• art.....	<input checked="" type="checkbox"/>	<input type="checkbox"/>
• drama or theater.....	<input checked="" type="checkbox"/>	<input type="checkbox"/>
• music.....	<input checked="" type="checkbox"/>	<input type="checkbox"/>
• physical education.....	<input checked="" type="checkbox"/>	<input type="checkbox"/>
• opportunity for civic or community engagement.....	<input checked="" type="checkbox"/>	<input type="checkbox"/>
• internet safety program.....	<input type="checkbox"/>	<input checked="" type="checkbox"/>
• International Baccalaureate.....	<input type="checkbox"/>	<input checked="" type="checkbox"/>
• extracurricular activities.....	<input checked="" type="checkbox"/>	<input type="checkbox"/>
• athletics.....	<input checked="" type="checkbox"/>	<input type="checkbox"/>
• career and technical education.....	<input checked="" type="checkbox"/>	<input type="checkbox"/>
• honors.....	<input checked="" type="checkbox"/>	<input type="checkbox"/>

## Safety and Discipline

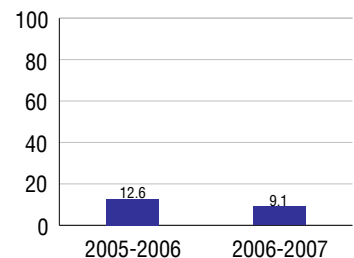
Safe schools are a top priority for parents, teachers, and communities. Your school safety and discipline record for the 2007-2008 school year is:

Type of Incident	Number of Incidents Reported	Percent of Total Incidents
Substance Abuse - Drugs	12	21.4%
Substance Abuse - Alcohol	1	1.8%
Substance Abuse - Tobacco		
Felony Assaults		
Fights		
Possession of Dangerous Weapons	1	1.8%
Other Violations Code of Conduct	42	75.0%

## Student Attendance and School Calendar

2007-2008	Your School
Enrollment	477
Average Daily Attendance	438
Student Dropouts	9.1%

## Dropout Rate



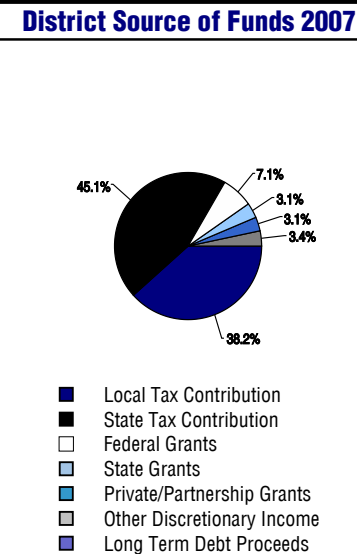
## Student Information Over Time

	2005-2006	2006-2007	2007-2008
Student Enrollment Stability	83.8%	89.9%	94.5%
Students Eligible for Free and Reduced Lunch	50.6 %	44.3 %	53.9 %

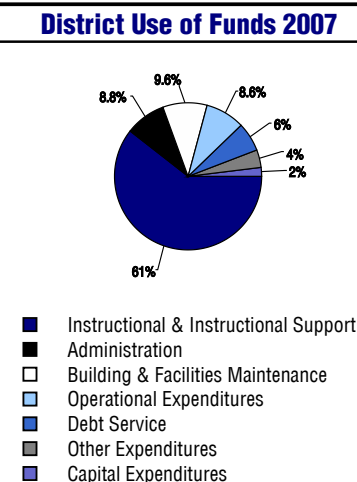
For more information and further details about this report, visit [www.state.co.us/schools](http://www.state.co.us/schools)  
 Colorado Department of Education, 201 East Colfax Ave. Denver, CO 80203  
**Mapleton Expeditionary School Of The Arts**  
 0010/0187/M  
 8990 York Street . Thornton, CO 80299 . 303-853-1270  
 12/5/2008

# DISTRICT TAXPAYER'S REPORT

Sources of School District Revenue	2007
Local Tax Contribution	\$17,823,450
State Tax Contribution	21,009,743
Federal Grants	3,331,764
State Grants	1,466,656
Private/Partnership Grants	1,433,104
Other Discretionary Income	1,569,578
<b>Total District Operating Revenue</b>	<b>\$46,634,295</b>
Long Term Debt Proceeds	0
<b>Total District Revenue</b>	<b>\$46,634,295</b>
<b>Total District Operating Revenue Per Pupil =</b>	<b>\$8,981</b>
<b>Total District Revenue Per Pupil (Including Long Term Debt) =</b>	<b>\$8,981</b>
<b>District Per Pupil Operating Revenue =</b>	<b>\$6,082</b>
<b>State Average Per Pupil Operating Revenue =</b>	<b>\$6,080</b>



District Use of Funds	2007
Instructional & Instructional Support	\$28,725,020
Administration	4,190,234
Building & Facilities Maintenance	4,557,153
Operational Expenditures	4,085,967
Debt Service	3,025,340
Other Expenditures	1,797,988
<b>Total District Operating Expenditures</b>	<b>\$46,381,702</b>
Capital Expenditures	970,985
<b>Total District Use of Funds</b>	<b>\$47,352,687</b>



## District Debt and Capital Construction & Equipment

Total Outstanding Bonded Debt	\$13,880,000
Average Annual Percentage Interest Rate on Debt	5.2%
Amount Raised from Most Recent Bond	\$24,535,000
Amount Spent on New Buildings During Last 2 Years	\$0

## Accreditation

Accreditation is Colorado's primary accountability system, incorporating achievement levels, academic growth, achievement gaps, post-secondary readiness, improvement planning, and compliance. The state accredits districts and districts accredit individual schools.

District Accreditation Status for the 2007-2008 school year:

## Voter Approved Funding Changes

Your community did  /did not  hold an election in November 2006

The following items have been approved by voters:

TABOR Override

Bond

Mill Levy Increase

# MAPLETON EXPEDITIONARY SCHOOL



7 - 8  
MAPLETON 1

[www.mapleton.us](http://www.mapleton.us)

## School Accountability Report 2007-2008 School Year

### School Performance Summary

**Overall Academic Performance on State Assessments** **Low**

**Academic Growth of Students** **Low**

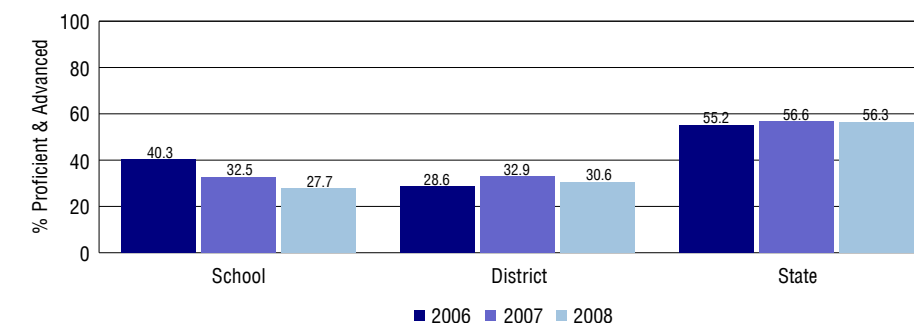
#### Overall Academic Performance on State Assessments

Each school in the State received a rating of "Excellent", "High", "Average", "Low", or "Unsatisfactory" for student academic performance based on 2007-2008 CSAP and COACT results. The rating is calculated using weighted percentages of each CSAP proficiency level for all content area and grade results for the school, as well as average COACT Reading, Writing, and Math Grade 11 results.

#### Academic Growth of Students

Each school in the State received a rating of "Low", "Typical", or "High" for student academic growth based on CSAP results. The calculation method is new for 2007-2008. The rating is calculated using student percentile scores matched over two years. More information about the Overall Academic Performance rating and Academic Growth of Students calculations can be found here: [http://www.cde.state.co.us/cdeassess/SAR\\_Info.html](http://www.cde.state.co.us/cdeassess/SAR_Info.html).

### Percent Proficient and Advanced for Middle Grades for All Content Areas



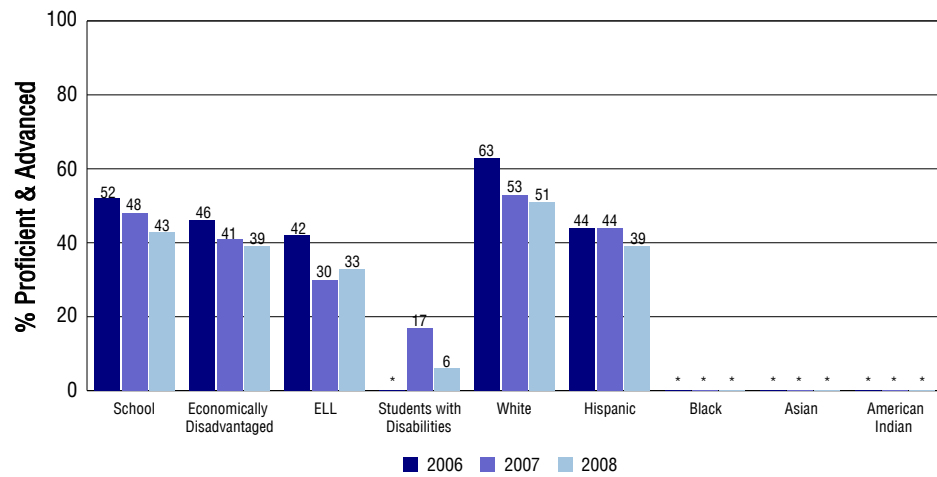
### Student Test Scores Used For Calculating Overall Academic Performance

98.3%	Test Scores Counted
0.5%	Test Scores not used due to Language
1.2%	Test Scores not used due to New Student

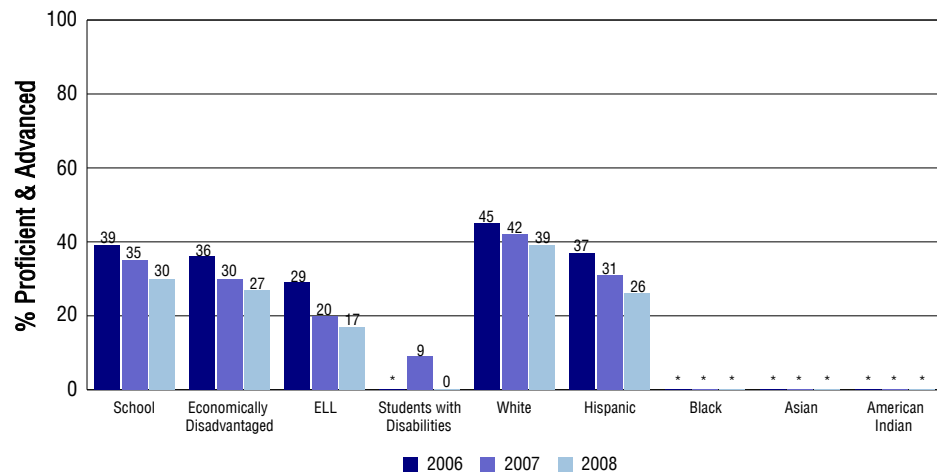
## STUDENT PERFORMANCE

These graphs show the percent Proficient and Advanced trends over the past three years for Reading, Writing, and Math. Results are presented for the entire school for all reported grades as well as for different subgroups. Note: \* indicates any group with less than 16 student results to be reported.

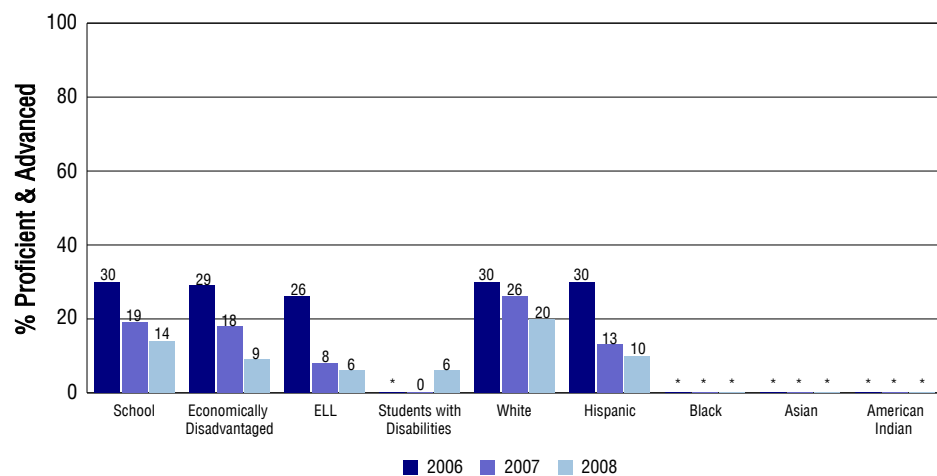
### Reading



### Writing



### Math



## SCHOOL INFORMATION

### School Pride (as submitted by your district)

- 100% of Mapleton Expeditionary School of the Arts' seniors were admitted to a 4 year college.
- MESA seniors averaged more than \$10,000 of college scholarships per student, three of whom won the coveted Daniels Fund scholarships.
- Use of visual arts, drama and music to expand student mastery of the core subjects of English, social studies, science and math.
- 

### School Goals (as submitted by your district)

Goal #1) Our school continues to focus on analyzing student work to identify needs, set goals for growth and proficiency, and modify instruction to achieve those goals. #2) This means that we will continue to expand our teachers' capacity to diagnose needs and adjust instruction based on our assessments in each content area. # 3) We will also continue to improve our ability to use the workshop model and high-yield instructional strategies that we have emphasized this year. # 4) We will continue building upon our success from this year by ensuring that 100 percent of our seniors are admitted to a four year college.

### No Child Left Behind - Adequate Yearly Progress

Did your school make AYP in reading?	No	Math?	No
How many targets does your school have?	30	Met?	22

Based on this school's academic performance, your child may be eligible for one or more of the following; ask your school if your child qualifies for:

Extra academic instruction either before or after-school, or in the summer  
Mentoring

For additional information regarding Adequate Yearly Progress please visit <http://www.cde.state.co.us/FedPrograms/ayp/index.asp>

### How Mapleton Expeditionary School Of The Arts Compares To Middle Schools Within A 75-Mile Radius

School	Program Type	Academic Performance	Academic Growth
Hulstrom Elementary School(1)		Excellent	Typical
Century Middle School(1)		High	Low
Colorado Virtual Academy (Cova)(1)	Charter, Online	Average	Low
Northglenn Middle School(1)		Average	Typical
Shadow Ridge Middle School(1)		Average	Low
Stargate Charter School(1)	Charter	Excellent	High
Rocky Top Middle School(1)		High	High
Silver Hills Middle School(1)		Average	Typical
York International	Magnet	Average	Typical
Clayton Partnership School	Magnet	Low	Low

1 Located in Adams 12 Five Star Schools School District.

## ABOUT OUR STAFF

### School Employment

Each year, your district reports to the Colorado Department of Education on the number of adults who work in your school, as well as the type of work they do. Last year, your school employed:

	Your School		District	
	Full Time	Part Time	Full Time	Part Time
Teachers	32	0	287	18
Paraprofessionals	3	1	80	36
Administrators	1	0	25	1
Other Professionals	3	0	47	7
School Support	4	4	90	59
School Counselors	1	0	4	0
School Librarians	0	0	0	0
<b>Total Staff</b>	49		648	

### Students per Teacher Ratio

	Student Enrollment	Students per Teacher
Grade 7	101	12.1
Grade 8	101	16

### Professional Experience of Teachers

	Your School	District
Average years of teaching experience	5	8
Percent of teachers teaching in the subject in which they received their degree	69%	60%
Number of teachers with Masters or Doctoral degrees	23	140
Teachers with 3 years or more of teaching experience	19	201
Teachers with less than 3 years of teaching experience	13	104
Number of professional development days	11	7

### Salaries

	Your School	District	State
Average Teacher Salary	\$47,136	\$48,751	\$47,494
Average Administrator Salary	\$87,685	\$96,637	\$80,444

Principal: Michael Johnston

Number of years as Principal at this school: 3

Number of years as Principal at any school: 3