

SAFETY AND SCHOOL ENVIRONMENT

Non-CSAP Course Offerings

Your School Offers	does	does not
• art.....	<input checked="" type="checkbox"/>	<input type="checkbox"/>
• drama or theater.....	<input type="checkbox"/>	<input checked="" type="checkbox"/>
• music.....	<input checked="" type="checkbox"/>	<input type="checkbox"/>
• physical education.....	<input checked="" type="checkbox"/>	<input type="checkbox"/>
• opportunity for civic or community engagement.....	<input checked="" type="checkbox"/>	<input type="checkbox"/>
• internet safety program.....	<input checked="" type="checkbox"/>	<input type="checkbox"/>
• International Baccalaureate.....	<input type="checkbox"/>	<input checked="" type="checkbox"/>
• extracurricular activities.....	<input checked="" type="checkbox"/>	<input type="checkbox"/>
• athletics.....	<input checked="" type="checkbox"/>	<input type="checkbox"/>
• career and technical education.....	<input type="checkbox"/>	<input checked="" type="checkbox"/>
• honors.....	<input type="checkbox"/>	<input checked="" type="checkbox"/>

Safety and Discipline

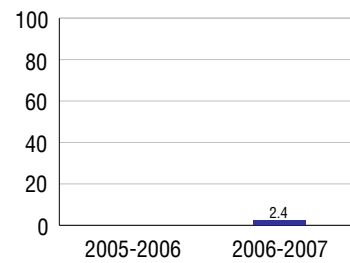
Safe schools are a top priority for parents, teachers, and communities. Your school safety and discipline record for the 2007-2008 school year is:

Type of Incident	Number of Incidents Reported	Percent of Total Incidents
Substance Abuse - Drugs		
Substance Abuse - Alcohol		
Substance Abuse - Tobacco		
Felony Assaults		
Fights		
Possession of Dangerous Weapons		
Other Violations Code of Conduct	21	100.0%

Student Attendance and School Calendar

2007-2008	Your School
Enrollment	403
Average Daily Attendance	382
Student Dropouts	4.2%

Dropout Rate



Student Information Over Time

	2005-2006	2006-2007	2007-2008
Student Enrollment Stability	N/A	94.2%	92.8%
Students Eligible for Free and Reduced Lunch	N/A	50.5 %	65.3 %

For more information and further details about this report, visit www.state.co.us/schools
 Colorado Department of Education, 201 East Colfax Ave. Denver, CO 80203
Meadow Community School
 0010/0502/M
 9150 Monroe St. Thornton, CO 80229 . 303-853-1500
 10/20/2008

DISTRICT TAXPAYER'S REPORT

Sources of School District Revenue 2007

Local Tax Contribution	\$17,823,450
State Tax Contribution	21,009,743
Federal Grants	3,331,764
State Grants	1,466,656
Private/Partnership Grants	1,433,104
Other Discretionary Income	1,569,578
Total District Operating Revenue	\$46,634,295
Long Term Debt Proceeds	0
Total District Revenue	\$46,634,295
Total District Operating Revenue Per Pupil =	\$8,981
Total District Revenue Per Pupil (Including Long Term Debt) =	\$8,981
District Per Pupil Operating Revenue =	\$6,082
State Average Per Pupil Operating Revenue =	\$6,080

District Use of Funds 2007

Instructional & Instructional Support	\$28,725,020
Administration	4,190,234
Building & Facilities Maintenance	4,557,153
Operational Expenditures	4,085,967
Debt Service	3,025,340
Other Expenditures	1,797,988
Total District Operating Expenditures	\$46,381,702
Capital Expenditures	970,985
Total District Use of Funds	\$47,352,687

District Debt and Capital Construction & Equipment

Total Outstanding Bonded Debt	\$13,880,000
Average Annual Percentage Interest Rate on Debt	5.2%
Amount Raised from Most Recent Bond	\$24,535,000
Amount Spent on New Buildings During Last 2 Years	\$0

Accreditation

Accreditation is Colorado's primary accountability system, incorporating achievement levels, academic growth, achievement gaps, post-secondary readiness, improvement planning, and compliance. The state accredits districts and districts accredit individual schools.

District Accreditation Status for the 2007-2008 school year:

Voter Approved Funding Changes

Your community did /did not hold an election in November 2006

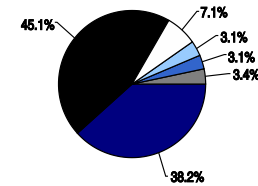
The following items have been approved by voters:

TABOR Override

Bond

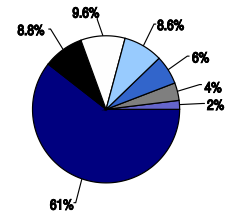
Mill Levy Increase

District Source of Funds 2007



Local Tax Contribution
 State Tax Contribution
 Federal Grants
 State Grants
 Private/Partnership Grants
 Other Discretionary Income
 Long Term Debt Proceeds

District Use of Funds 2007



Instructional & Instructional Support
 Administration
 Building & Facilities Maintenance
 Operational Expenditures
 Debt Service
 Other Expenditures
 Capital Expenditures

MEADOW COMMUNITY SCHOOL



MAPLETON 1

Magnet

www.mapleton.us

School Accountability Report 2007-2008 School Year

School Performance Summary

Overall Academic Performance on State Assessments **Low**

Academic Growth of Students **Low**

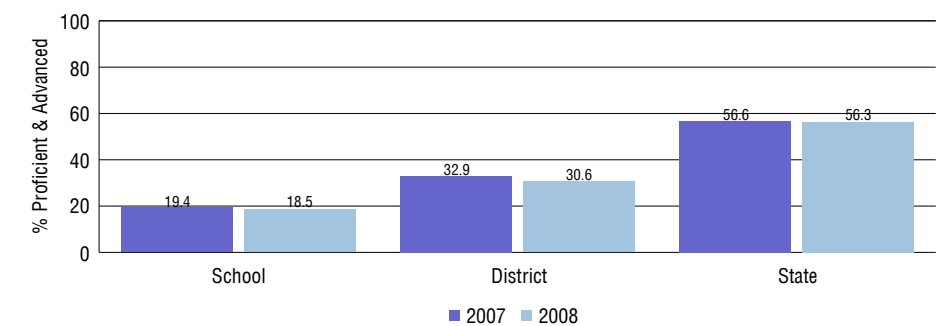
Overall Academic Performance on State Assessments

Each school in the State received a rating of "Excellent", "High", "Average", "Low", or "Unsatisfactory" for student academic performance based on 2007-2008 CSAP and COACT results. The rating is calculated using weighted percentages of each CSAP proficiency level for all content area and grade results for the school, as well as average COACT Reading, Writing, and Math Grade 11 results.

Academic Growth of Students

Each school in the State received a rating of "Low", "Typical", or "High" for student academic growth based on CSAP results. The calculation method is new for 2007-2008. The rating is calculated using student percentile scores matched over two years. More information about the Overall Academic Performance rating and Academic Growth of Students calculations can be found here: http://www.cde.state.co.us/cdeassess/SAR_Info.html.

Percent Proficient and Advanced for Middle Grades for All Content Areas



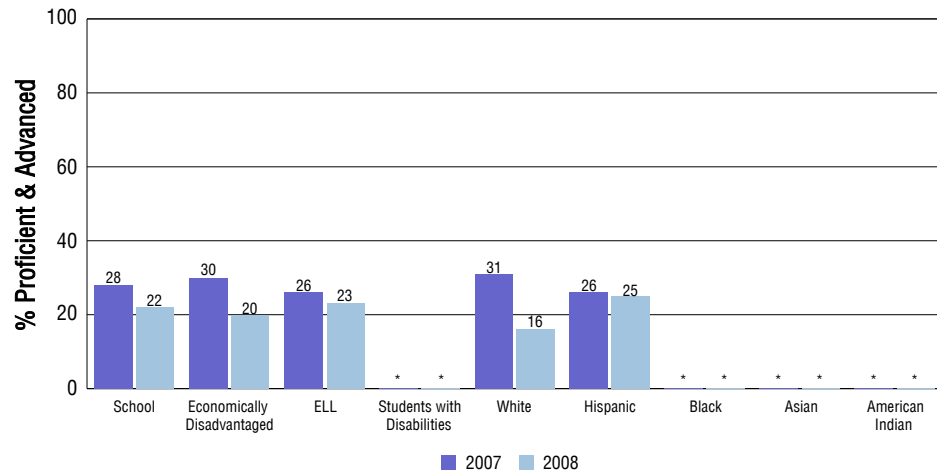
Student Test Scores Used For Calculating Overall Academic Performance

86.2%	Test Scores Counted
3.5%	Test Scores not used due to Language
10.3%	Test Scores not used due to New Student

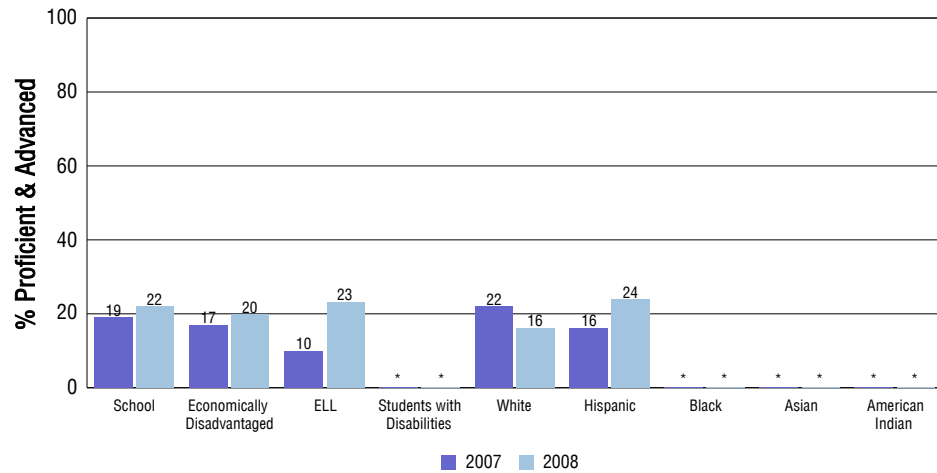
STUDENT PERFORMANCE

These graphs show the percent Proficient and Advanced trends over the past three years for Reading, Writing, and Math. Results are presented for the entire school for all reported grades as well as for different subgroups. Note: * indicates any group with less than 16 student results to be reported.

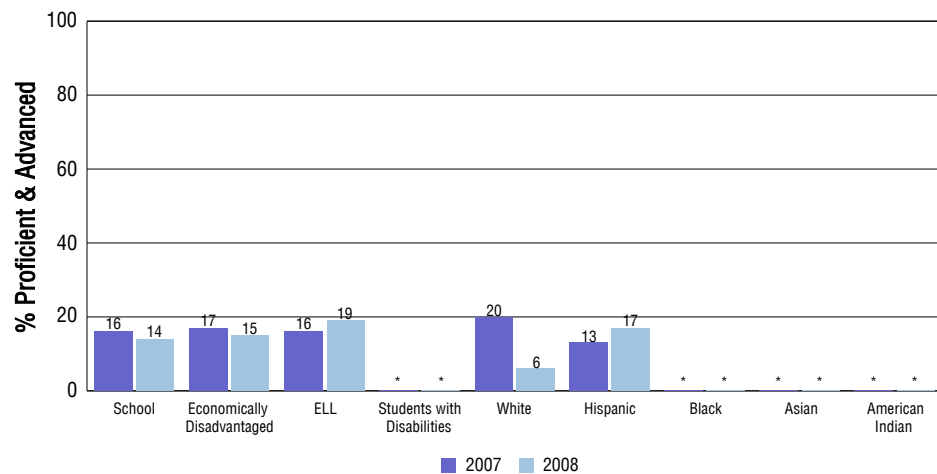
Reading



Writing



Math



SCHOOL INFORMATION

School Pride (as submitted by your district)

- Meadow is committed to the belief that the future success of our students will come from a strong sense of community.
- Teaching students to be active leaders in communities where they currently belong, as well as communities they will work in for the rest of their lives.
- Students are involved in active community service and community outreach at every grade level.
- Students receive vigorous inquiry-based instruction and are expected to participate in individualized public demonstrations of mastery.

School Goals (as submitted by your district)

Our academic goal is to score at or above the Colorado state averages in all CSAP tested areas.

No Child Left Behind - Adequate Yearly Progress

Did your school make AYP in reading?	No	Math?	No
How many targets does your school have?	22	Met?	16

Based on this school's academic performance, your child may be eligible for one or more of the following; ask your school if your child qualifies for:

Extra academic instruction either before or after-school, or in the summer
Mentoring

For additional information regarding Adequate Yearly Progress please visit
<http://www.cde.state.co.us/FedPrograms/ayp/index.asp>

How Meadow Community School Compares To Middle Schools Within A 75-Mile Radius

School	Program Type	Academic Performance	Academic Growth
Clayton Partnership School	Magnet	Low	Low
York International	Magnet	Average	Typical
Achieve Academy	Magnet	Low	Typical
Monterey Community School	Magnet	Low	Typical
Thornton Middle School(1)		Low	Low
Northglenn Middle School(1)		Average	Typical
Adams City Middle School(2)		Low	Low
Community Leadership Academy(2)	Charter	Low	Typical
Global Leadership Academy		Low	Low
The Pinnacle Charter School (Middle)(3)	Charter	Average	Typical

1 Located in Adams 12 Five Star Schools School District.

2 Located in Adams County 14 School District.

3 Located in Charter School Institute School District.

ABOUT OUR STAFF

School Employment

Each year, your district reports to the Colorado Department of Education on the number of adults who work in your school, as well as the type of work they do. Last year, your school employed:

	Your School		District	
	Full Time	Part Time	Full Time	Part Time
Teachers	19	2	287	18
Paraprofessionals	4	0	80	36
Administrators	0	0	25	1
Other Professionals	1	0	47	7
School Support	3	1	90	59
School Counselors	0	0	4	0
School Librarians	0	0	0	0
Total Staff	30		648	

Students per Teacher Ratio

	Student Enrollment	Students per Teacher
Grade 6	48	28.9
Grade 7	42	19.2
Grade 8	25	11.4

Professional Experience of Teachers

	Your School	District
Average years of teaching experience	5	8
Percent of teachers teaching in the subject in which they received their degree	25%	60%
Number of teachers with Masters or Doctoral degrees	7	140
Teachers with 3 years or more of teaching experience	9	201
Teachers with less than 3 years of teaching experience	12	104
Number of professional development days	4	7

Salaries

	Your School	District	State
Average Teacher Salary	\$43,334	\$48,751	\$47,494
Average Administrator Salary	\$0	\$96,637	\$80,444

Principal: N/R

Number of years as Principal at this school: N/R

Number of years as Principal at any school: N/R