

# SAFETY AND SCHOOL ENVIRONMENT

## Non-CSAP Course Offerings

Your School Offers	does	does not
• art.....	<input type="checkbox"/>	<input checked="" type="checkbox"/>
• drama or theater.....	<input type="checkbox"/>	<input checked="" type="checkbox"/>
• music.....	<input checked="" type="checkbox"/>	<input type="checkbox"/>
• physical education.....	<input checked="" type="checkbox"/>	<input type="checkbox"/>
• opportunity for civic or community engagement.....	<input checked="" type="checkbox"/>	<input type="checkbox"/>
• internet safety program.....	<input checked="" type="checkbox"/>	<input type="checkbox"/>
• International Baccalaureate.....	<input type="checkbox"/>	<input checked="" type="checkbox"/>
• extracurricular activities.....	<input checked="" type="checkbox"/>	<input type="checkbox"/>
• athletics.....	<input checked="" type="checkbox"/>	<input type="checkbox"/>
• career and technical education.....	<input checked="" type="checkbox"/>	<input type="checkbox"/>
• advanced placement.....	<input type="checkbox"/>	<input checked="" type="checkbox"/>
• honors.....	<input checked="" type="checkbox"/>	<input type="checkbox"/>

## Safety and Discipline

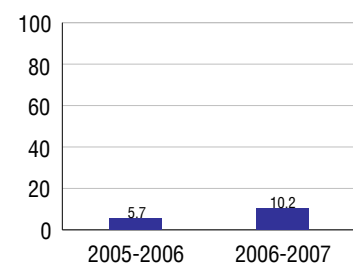
Safe schools are a top priority for parents, teachers, and communities. Your school safety and discipline record for the 2007-2008 school year is:

Type of Incident	Number of Incidents Reported	Percent of Total Incidents
Substance Abuse - Drugs	16	25.8%
Substance Abuse - Alcohol	8	12.9%
Substance Abuse - Tobacco		
Felony Assaults		
Fights	3	4.8%
Possession of Dangerous Weapons	2	3.2%
Other Violations Code of Conduct	33	53.2%

## Student Attendance and School Calendar

2007-2008	Your School
Enrollment	328
Average Daily Attendance	286
Student Dropouts	10.2%

## Dropout Rate



## Student Information Over Time

	2005-2006	2006-2007	2007-2008
Student Enrollment Stability	92%	89.3%	92.1%
Students Eligible for Free and Reduced Lunch	46.5 %	40.2 %	47.0 %

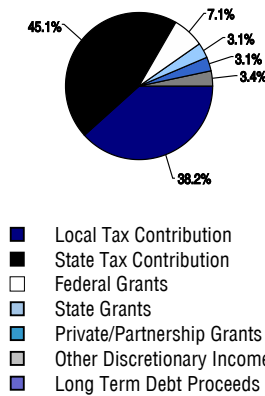
For more information and further details about this report, visit [www.state.co.us/schools](http://www.state.co.us/schools)  
 Colorado Department of Education, 201 East Colfax Ave. Denver, CO 80203  
**Skyview Academy High School**  
 0010/0309/H  
 8990 York Street . Thornton, CO 80229 . 303-853-1900  
 10/20/2008

# DISTRICT TAXPAYER'S REPORT

## Sources of School District Revenue 2007

Local Tax Contribution	\$17,823,450
State Tax Contribution	21,009,743
Federal Grants	3,331,764
State Grants	1,466,656
Private/Partnership Grants	1,433,104
Other Discretionary Income	1,569,578
<b>Total District Operating Revenue</b>	<b>\$46,634,295</b>
Long Term Debt Proceeds	0
<b>Total District Revenue</b>	<b>\$46,634,295</b>
<b>Total District Operating Revenue Per Pupil =</b>	<b>\$8,981</b>
<b>Total District Revenue Per Pupil (Including Long Term Debt) =</b>	<b>\$8,981</b>
<b>District Per Pupil Operating Revenue =</b>	<b>\$6,082</b>
<b>State Average Per Pupil Operating Revenue =</b>	<b>\$6,080</b>

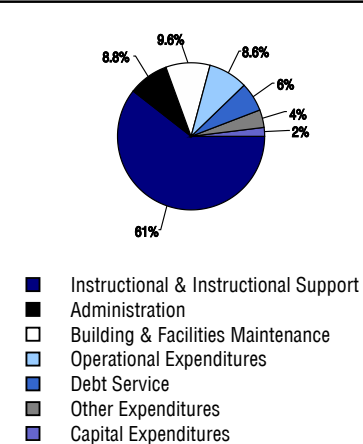
## District Source of Funds 2007



## District Use of Funds 2007

Instructional & Instructional Support	\$28,725,020
Administration	4,190,234
Building & Facilities Maintenance	4,557,153
Operational Expenditures	4,085,967
Debt Service	3,025,340
Other Expenditures	1,797,988
<b>Total District Operating Expenditures</b>	<b>\$46,381,702</b>
Capital Expenditures	970,985
<b>Total District Use of Funds</b>	<b>\$47,352,687</b>

## District Use of Funds 2007



## District Debt and Capital Construction & Equipment

Total Outstanding Bonded Debt	\$13,880,000
Average Annual Percentage Interest Rate on Debt	5.2%
Amount Raised from Most Recent Bond	\$24,535,000
Amount Spent on New Buildings During Last 2 Years	\$0

## Accreditation

Accreditation is Colorado's primary accountability system, incorporating achievement levels, academic growth, achievement gaps, post-secondary readiness, improvement planning, and compliance. The state accredits districts and districts accredit individual schools.

District Accreditation Status for the 2007-2008 school year:

## Voter Approved Funding Changes

Your community did  /did not  hold an election in November 2006

The following items have been approved by voters:

TABOR Override

Bond

Mill Levy Increase

# SKYVIEW ACADEMY HIGH SCHOOL



MAPLETON 1

[www.mapleton.us](http://www.mapleton.us)

## School Accountability Report 2007-2008 School Year

### School Performance Summary

**Overall Academic Performance on State Assessments** **Low**

**Academic Growth of Students** **Low**

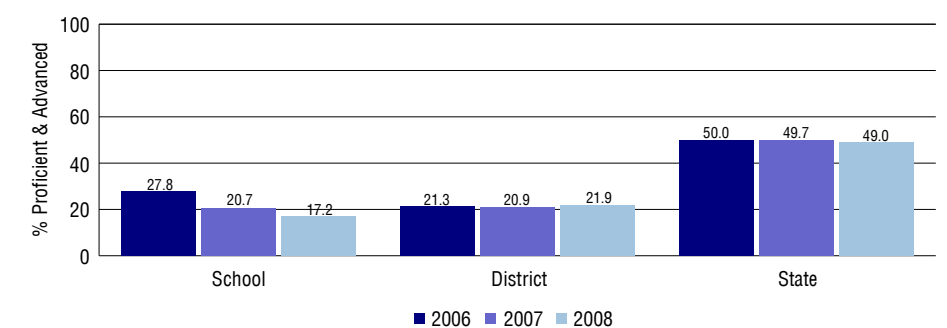
### Overall Academic Performance on State Assessments

Each school in the State received a rating of "Excellent", "High", "Average", "Low", or "Unsatisfactory" for student academic performance based on 2007-2008 CSAP and COACT results. The rating is calculated using weighted percentages of each CSAP proficiency level for all content area and grade results for the school, as well as average COACT Reading, Writing, and Math Grade 11 results.

### Academic Growth of Students

Each school in the State received a rating of "Low", "Typical", or "High" for student academic growth based on CSAP results. The calculation method is new for 2007-2008. The rating is calculated using student percentile scores matched over two years. More information about the Overall Academic Performance rating and Academic Growth of Students calculations can be found here: [http://www.cde.state.co.us/cdeassess/SAR\\_Info.html](http://www.cde.state.co.us/cdeassess/SAR_Info.html).

## Percent Proficient and Advanced for High Grades for All Content Areas



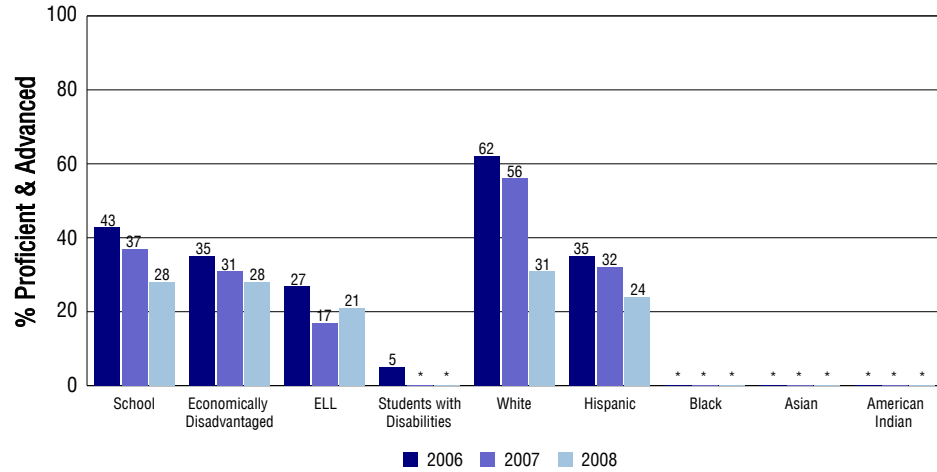
## Student Test Scores Used For Calculating Overall Academic Performance

94.2%	Test Scores Counted
3.2%	Test Scores not used due to Language
2.6%	Test Scores not used due to New Student

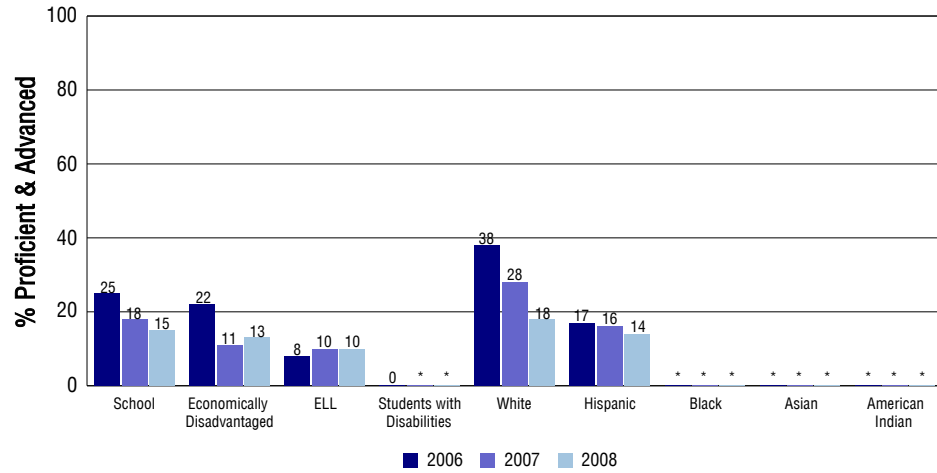
## STUDENT PERFORMANCE

These graphs show the percent Proficient and Advanced trends over the past three years for Reading, Writing, and Math. Results are presented for the entire school for all reported grades as well as for different subgroups. Note: \* indicates any group with less than 16 student results to be reported.

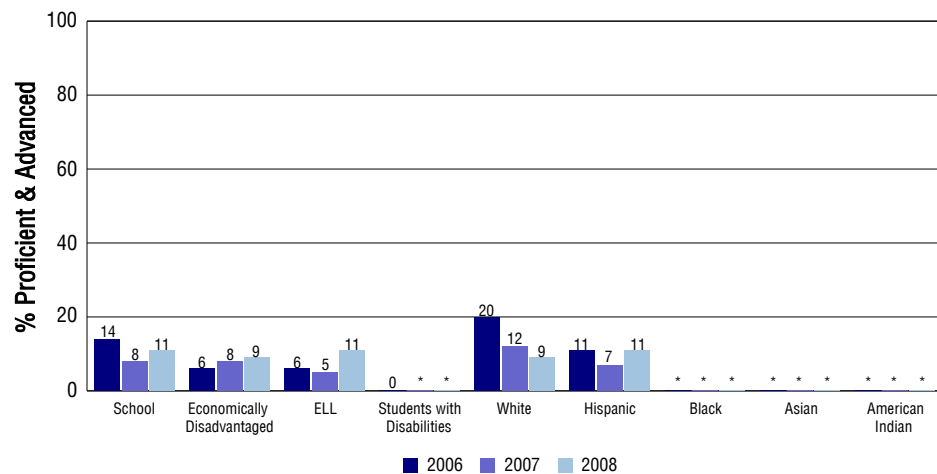
### Reading



### Writing



### Math



## SCHOOL INFORMATION

### School Pride (as submitted by your district)

- Students set high standards for their work through discussion-based, topic-directed learning for all core content areas.
- Commitment to the Coalition of Essential Schools common principles (see [www.essentialschools.org](http://www.essentialschools.org) for more information).
- Opportunities to access internships and college-level course work during the junior and senior year.
- Project-based activities, resulting in portfolios, exhibitions, narratives, journal entries and transcripts for demonstrating student's learning.

### School Goals (as submitted by your district)

As interventions for students that are not progressing, we have initiated student-paced learning, a new deadline structure for assignments, and a standards-driven list of essential outcomes for each class for each quarter. Interventions are provided for students that are not progressing appropriately toward meeting academic standards. Professional development is focused on creating a common instructional pedagogy that aligns with inquiry, is student-paced, and utilizes real world projects as a teaching model. Assessment data are used to determine the attainment of standards in reading, language and math, and to track student progress throughout the year.

### No Child Left Behind - Adequate Yearly Progress

Did your school make AYP in reading?	No	Math?	No
Did your school make the graduation rate targets?	Yes		
How many targets does your school have?	18	Met?	11

Based on this school's academic performance, your child may be eligible for one or more of the following; ask your school if your child qualifies for:

Extra academic instruction either before or after-school, or in the summer  
Mentoring

For additional information regarding Adequate Yearly Progress please visit <http://www.cde.state.co.us/FedPrograms/ayp/index.asp>

### How Skyview Academy High School Compares To High Schools Within A 75-Mile Radius

School	Program Type	Academic Performance	Academic Growth
York International	Magnet	Average	Typical
Thornton High School(1)		Average	High
Welby New Technology		Low	Typical
Global Leadership Academy		Low	Typical
The Pinnacle Charter School (High)(2)	Charter	High	High
Northglenn High School(1)		Average	Typical
Adams City High School(3)		Low	Low
Lester R Arnold High School(3)	Alternative	Low	No Rating
Iver C. Ranum High School(4)		Low	Typical
Front Range Early College		Low	Typical

1 Located in Adams 12 Five Star Schools School District.

2 Located in Charter School Institute School District.

3 Located in Adams County 14 School District.

4 Located in Westminster 50 School District.

## ABOUT OUR STAFF

### School Employment

Each year, your district reports to the Colorado Department of Education on the number of adults who work in your school, as well as the type of work they do. Last year, your school employed:

	Your School		District	
	Full Time	Part Time	Full Time	Part Time
Teachers	16	1	287	18
Paraprofessionals	2	1	80	36
Administrators	1	0	25	1
Other Professionals	2	0	47	7
School Support	9	3	90	59
School Counselors	1	0	4	0
School Librarians	0	0	0	0
<b>Total Staff</b>	36		648	

### Students per Teacher Ratio

	Student Enrollment	Students per Teacher
Grade 9	81	30.9
Grade 10	90	13.9
Grade 11	56	14.2
Grade 12	101	29.2

### Professional Experience of Teachers

	Your School	District
Average years of teaching experience	5	8
Percent of teachers teaching in the subject in which they received their degree	47%	60%
Number of teachers with Masters or Doctoral degrees	11	140
Teachers with 3 years or more of teaching experience	11	201
Teachers with less than 3 years of teaching experience	6	104
Number of professional development days	4	7

### Salaries

	Your School	District	State
Average Teacher Salary	\$47,015	\$48,751	\$47,494
Average Administrator Salary	\$98,397	\$96,637	\$80,444

Principal: Eldon Wire

Number of years as Principal at this school: 3

Number of years as Principal at any school: 3